



C15 ACERT™ MARINE PROPULSION

865 mhp (853
bhp) 636 bkW

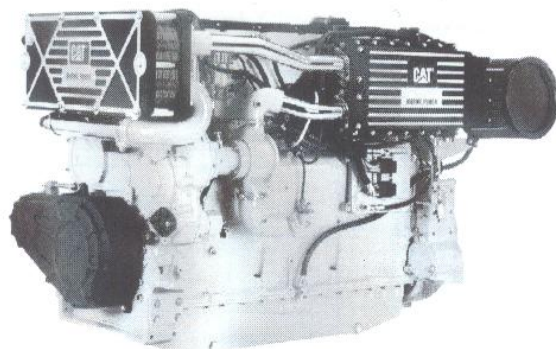


Image shown may not reflect
actual Engine

SPECIFICATIONS

I-6, 4-Stroke-Cycle-Diesel

Emissions.....	IMO compliant
Displacement.....	14.64 L (893.39 in ³)
Rated Engine Speed.....	2300
Bore.....	137.16 mm (5.4 in)
Stroke.....	165.1 mm (6.5 in)
Aspiration.....	Turbocharged-Aftercooled
Governor.....	Electronic
Cooling System.....	Heat Exchanger
Weight, Net Dry (approx.).....	1464 kg (3,226 lb)
Refill Capacity	
Cooling System.....	20.8 L (5.5 gal)
Lube Oil System.....	49.0 L (12.9 gal)
Oil Change Interval.....	250 hrs
Caterpillar Diesel Engine Oil 10W30 or 15W40	
Shallow Sump Oil Pan	
Rotation (from flywheel end).....	Counterclockwise
Flywheel and Flywheel Housing.....	SAE No. 1
Flywheel Teeth.....	113
Max. Exhaust Backpressure.....	10.0 kPa (40.2 in. water)
Fuel Consumption.....	158.6 L/hr (41.9 gal/hr)

STANDARD ENGINE EQUIPMENT

Air Inlet System

Corrosion resistant aftercooler core, light duty air cleaner (open system)

Cooling System

Self priming auxiliary sea water pump with rubber impeller, gear driven jacket water pump, titanium plate heat exchanger with expansion tank, coolant recovery system, thermostat and housing

Exhaust System

Watercooled exhaust manifold and turbocharger, round flanged outlet

Fuel System

Fuel priming pump, fuel transfer pump, fuel filter - RH or LH service, flexible fuel lines

Instrumentation

24V instrument panel with electric service meter, start/stop switch, emergency stop button, maintenance due lamp, diagnostic lamp, warning lamp, maintenance clear switch, 15A and 30A breakers, and starter motor magnetic switch

Lube System

Crankcase breather, engine oil cooler, oil filter - RH or LH service, oil level gauge - RH or LH service, oil filler, shallow oil pan, gear driven oil pump

Mounting System

Front support - adjustable

Power Takeoffs

11 tooth spline SAE A hydraulic pump drive, two-groove crankshaft pulley

Protection System

12 or 24V electronic shutdown (energize-to-run)

General

Vibration damper and guard, Caterpillar yellow paint, lifting eyes, customer wiring connector and service tool connector

ISO Certification

Factory-designed systems built at Caterpillar
ISO 9001:2000 certified facilities